



Visit Ise-Shima National Park by bicycle

Ise-Shima National Park, located around the Shima Peninsula, is one of marine national parks which are rare in Japan. Traveling along the seaside cycling paths while feeling pleasant sea breeze, you will find many scenic spots of natural beauty, such as the super view created by the complicated coastline of a ria coast of Ago Bay. You will be impressed by an experience unique to this place.

At Kintetsu Ugata Station and other stations that serve as a starting point of sightseeing in Shima City, there are rental services of electric bicycles and "Bianchi" cross bikes. To completely feel the nature of Ise-Shima, rental bicycle is recommended.

Shima Sports Commission
 ■ Fee: Electric bicycles: from 1,500 yen, cross bikes: from 3,000 yen
 ■ Opening hours: 9:00-17:00 ■ Closed: Irregular



Electric-assist bike sharing HELLO CYCLING

Kintetsu Railway, as a partner operator, operates HELLO CYCLING in the Ise-Shima area. By taking advantage of the flexibility of bike sharing, we hope you will rediscover the charms you might have otherwise missed and find your own personal favorites in Ise-Shima.

- Locations** *One-way rentals available.
 ■ Major stations (Ise-shi Station, Ujijamada Station, JR Futaminoura Station, Toba Station, Ugata Station, Kashikojima Station, etc.)
 ■ Major sightseeing facilities (parking lots near Ise Jingu Naiku, Yokoyama Observatory, accommodation facilities, etc.)
 ■ On Toshijima Island (Wagu Port, Momotori Port, etc.)
 ■ Rate: From 130 yen/30 min.
- Contact**
 Tourism Development and Regional Co-creation Department, Creative Headquarters, Kintetsu Railway Co., Ltd. (+81-6-6775-3643)



Convenient rental cars for Ise-Shima sightseeing

Kintetsu Rental Lease offers a range of convenient rental cars for touring the Ise-Shima area. All offices are located in front of stations, and with a prior reservation, you can return the car to a different office (a separate drop-off fee may apply).
 *Please contact us for details.

- Car rental brand: ORIX Rent a Car
Offices in the Ise-Shima area
 ■ Kintetsu Matsusaka Ekimae Office (9:00 - 17:30) Tel.: +81-598-52-0577
 ■ Ise-shi Ekimae Office (8:00 - 18:00) Tel.: +81-596-20-5543
 ■ Ise Kintetsu Ujijamada Ekimae Office (8:00 - 18:00) Tel.: +81-596-28-0295
 ■ Kintetsu Toba Ekimae Office (9:00 - 18:00) Tel.: +81-599-25-3929
 ■ Shima Kintetsu Ugata Ekimae Office (9:00 - 18:00) Tel.: +81-599-43-1098

Car sharing available from Kashikojima Station

Kintetsu Railway, in collaboration with ORIX Auto Corporation, is operating ORIX CarShare at Kashikojima Station as a pilot project. Enjoy a new style of travel that bypasses urban congestion in the comfort of a Kintetsu Limited Express train and offers flexible sightseeing at your destination through car sharing.

■ Contact: Tourism Development and Regional Co-creation Department, Creative Headquarters, Kintetsu Railway Co., Ltd. (+81-6-6775-3643)

Scan here for car-sharing details and usage instructions.



*Pilot project period: Until the end of March 2027 (scheduled)



伊勢 ISESHIMA 志摩



Kintetsu Leisure Create. Co., Ltd.

<https://k-leisurecreate.co.jp>

2-1-43 Iwabuchi, Ise City, Mie Prefecture, 516-0037
 TEL. +81-596-28-2811 FAX. +81-596-28-2813

Scan here to download the digital version.



Visit Ise-Shima, to satisfy your mind and body

Ise-Shima is blessed with a wealth of history, culture, and nature, including Ise Jingu (Ise Grand Shrine), the spiritual home of the Japanese people, as well as the ancient culture of Ama divers and Ago Bay with its intricate ria coastline. If you venture a little further, you will find the Nagashima and Suzuka areas to the north, home to attractive theme parks, and the UNESCO World Heritage sites of Mt. Koya and the Kumano Sanzan shrines to the south. In Ise-Shima, a destination that has drawn people across the ages, you can enjoy a variety of travel styles to suit your preferences.

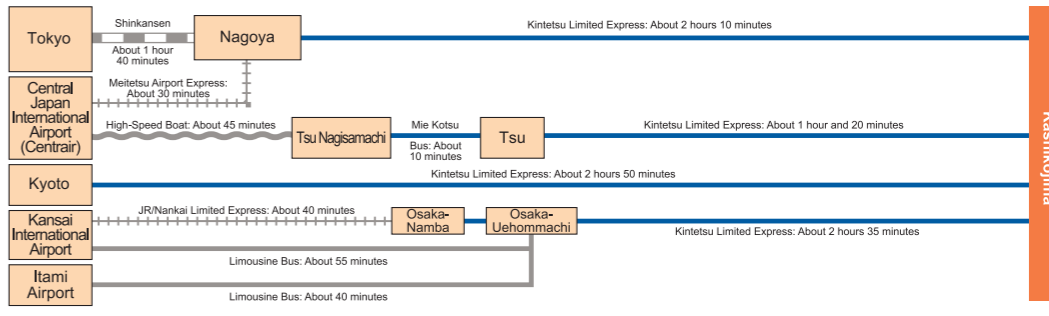
There are a variety of leisure facilities where you can actively play while feeling the affluent nature.

There are various types of accommodations to choose according to your purpose, preference, and occasion.

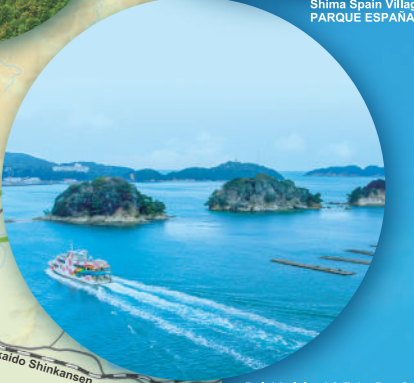
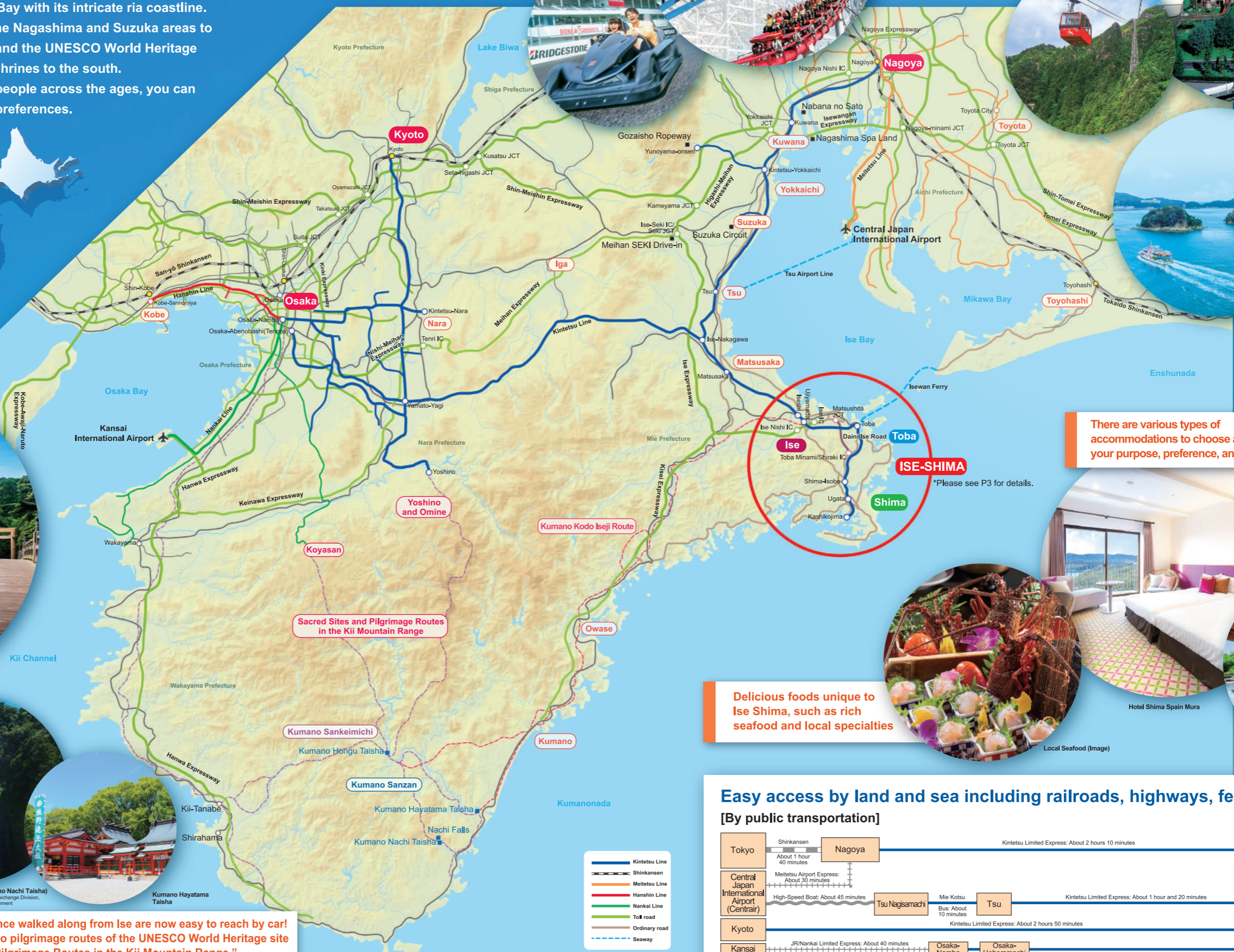
Delicious foods unique to Ise Shima, such as rich seafood and local specialties

Easy access by land and sea including railroads, highways, ferries

[By public transportation]



The roads people once walked along from Ise are now easy to reach by car! To the Kumano Kodo pilgrimage routes of the UNESCO World Heritage site "Sacred Sites and Pilgrimage Routes in the Kii Mountain Range."



Ise Jingu, Naiku (Ujibashi Bridge)

Ise Jingu, the spiritual home of the Japanese people that has been longed for as "the place to visit once in a lifetime"

Nachi Waterfall (Kumano Nachi Taisha) Picture provided by Tourism Exchange Division, Wakayama Prefectural Government

Kumano Hayatama Taisha

Kumano Kodo Iseji Route (Shingu City)

Hotel Shima Spain Mura

Local Seafood (Image)

Kashikojima Hojoen

Ise-Shime Area Map



Anorisaki Lighthouse

This lighthouse standing on Cape Anorisaki is square-shaped which is rare in Japan. From the observatory, visitors can enjoy a panoramic view of the tranquil Matoya Bay and the Pacific Ocean of the Black Current, divided by the grassy Anorisaki-enchi Park. There is a lighthouse café nearby.



Daiosaki Lighthouse

The picturesque lighthouse stands at the Cape Daido, where the rough waves of the Pacific Ocean surge. Looking out at the horizon from the observatory, a ship appears starting from the tip of the mast and the roundness of the earth can be felt. The lighthouse overlooks the town of Ishizaka, beloved by painters.



0 5km

Sightseeing

Ise Jingu

The spiritual home of the Japanese people with the history of over 2000 years

Ise Jingu, affectionately known since ancient times as "Oise-san," began its history 2,000 years ago. The Shrine is officially called "Jingu," consisting of 125 Naiku and Geku. The precinct where thousand-year-old cedars grow, is filled with pure air and a refreshing feeling. Jingu is the spiritual home of the Japanese people, which welcomes visitors in any time.



Ise Jingu (Naiku)

Access: Approx. 20 min. from Kintetsu Ujijamada Station or 10 min. from Kintetsu Isuzugawa Station by bus and get off at the Naiku-mae Stop.

Crossing the Ujibashi Bridge over the Isuzugawa River, there is Naiku sanctuary. The deity Amaterasu-Omikami is the ancestral kami (Shinto deity) of the Sun and the guardian of all Japanese people. In addition to the Goshogu (main sanctuary), there are two other affiliated shrines and 10 auxiliary shrines.

Oharai-machi, Okage Yokocho

Toriimae-machi (a town in front of Naiku) where Ise's specialties are gathered

From the Ujibashi Bridge in front of Naiku, the Oharai-machi district stretches out. Midway along this street lies Okage Yokocho, a recreation of the Ise Road townscape from the Edo to Meiji periods. Here, you will find plenty of Ise specialties. Enjoy a stroll while savoring local flavors and searching for souvenirs.



Ise Jingu (Geku)

Access: Approx. 5-minute walk from Kintetsu/JR Ise Station.

Toyouke-no-Omikami, enshrined in Goshogu, is the guardian of cloth, food and shelter as well as industry who was invited 1,500 years ago to preside over Amaterasu's food. Also, there are three affiliated shrines in the precinct and Tsukiyomi-no-Miya Shrine nearby.



Helping you make your trip to Ise unforgettable.

Ise Tourist Guide

You can visit Ise Jingu with a volunteer guide (the guide service is free). Please apply through the Ise City Tourist Association website between 50 and 7 days before your requested date. Applications for Geku can also be accepted on the day.



The Kagura Salon Travel Agency

A travel agency with an Ise office located in front of Ise Jingu Geku, offering guide services for Ise Jingu. They offer guided tours in flexible, regular, and customized formats.



Ama (women divers) Hut Experience

Hospitality of Ama divers who well know the local sea

Ama huts, places where Ama divers rest after fishing, were reproduced. Ama divers tell stories about the sea sitting beside a fireplace. The taste of seafood while talking with real Ama divers is exceptional. This is a rare opportunity to experience the culture of Ama divers, which has been recognized as a Japanese Heritage.



Ama Hut Experience Osatsu-kamado ("Mae-no-hama", "Ozegosan")



- Open for lunch only.
- Lunch time
- Number of persons: 2 or more / Time: 11:30 - 14:00 (about 1 hour)
- *Rate: 4,500 yen per adult.
- Reservations: Required by 17:00 p.m. the day before
- Access: By Train: Approx. 45 min. by bus from Kintetsu/JR Toba Station; get off at the Osatsu Stop.
- By Car: About 15 minutes from Tobaminami/Shiraki IC on the Daini Ise Road
- Parking capacity: 15 (free of charge)

Ama Hut HACHIMAN



- Open for lunch only.
- Amas' talk and tea time (snack) experience
- Number of people: 1 or more / Time: 10:00 - 11:30, 13:15 - 16:30 (about 50 minutes)
- Price: Adult 2,900 yen per person
- Ama hut cooking experience
- Number of people: 1 or more / Time: 11:45 -, 13:15 -, 14:45 - (about 75 minutes)
- Price: Adult: 4,700 yen per person
- *Other courses are available.
- Reservations: Required at least 2 days in advance.
- Access: By Train: Free shuttle bus available from Kintetsu/JR Toba Station (Reservation required).
- By car: About 15 minutes from Tobaminami/Shiraki IC on the Daini Ise Road
- Parking capacity: 30 passenger cars, 4 large-size buses (free of charge)

Ama Hut SATOUMIAN



- Open for lunch and dinner.
- Basic course
- Number of people: 3 or more / Time: 11:00 - 20:30 *Last course starts at 19:00 (about 1 hour and 30 minutes)
- Price: 3,850 yen per person *Other courses are available.
- Reservations: Required at least 2 days in advance
- Access: By train: About 60 minutes using bus from Kintetsu/Ugata Sta. and about 3 minute walk from Azurihama bus stop
- By car: About 1 hour and 15 minutes from Ise Nishi IC of Ise Road
- Parking capacity: 25 passenger cars, Space for large-size buses is available. (free of charge)



Dolphin Island & Toba Bay Cruise

Enjoy Toba Bay on a unique sightseeing boat!

This about 50-minute sightseeing cruise starts from Toba Marine Terminal. The unique sightseeing boat cruises the calm Toba Bay while enjoying a view of the scenic Mitsushima Island. On the Dolphin Island, the first place the boat stops, passengers can enjoy a program to learn about the ecology of dolphins, sea lions, and other sea creatures.



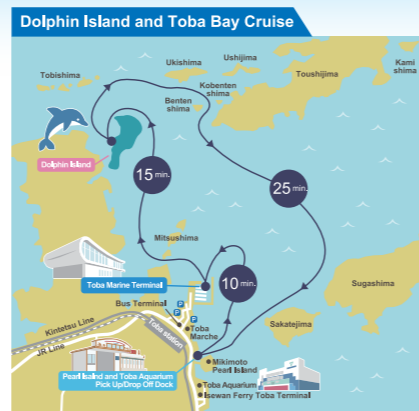
Sea lions playing ring toss and ball games are very charming!



You can also touch the soft and fluffy hands of otters.



The cruise ship "Ryugujo," featuring decorations with motifs from the legend of Ryugu-jo (Dragon Palace), including Urashima Taro



Point

Experience programs to enjoy learning the ecology of living creatures

Dolphin Island daily offers animal-handling programs, such as feeding, skin checking (Pay program, there is a limit for the number of participants.), and greeting with dolphin (Free program).



View from the observation deck

It takes about 2 minutes by a lift. From the observatory at the top of the mountain, visitors can see the blue sea and white wakes of the beautiful Toba Bay. They can also see Mitsushima Island, four isolated islands where people live, and even the Chita and Atsumi Peninsulas of Aichi Prefecture in the distance.



Restaurant "Flipper's Kitchen"

A relaxing spot on the island located just to the left of the entrance to Dolphin Island. Light meals such as cutlet curry and omelet rice, as well as alcoholic beverages, are available.



- Fare: Adults (junior high school students or older): 2,400 yen, Children (4 years old to elementary school students): 1,300 yen
- Group discount: 10% for a group of 15-99 people, 20% for a group of 100-299 people, 30% for a group of 300 or more people
- Cruising time: About 50 minutes

Flower Mermaid ■ Passenger capacity: 360 (Seats: 95 on 1F / 85 on 2F) ■ Facilities: Air conditioning, Wi-Fi, café corner, and restrooms
Ryugujo ■ Passenger capacity: 360 (Seats: 70 on 1F / 63 on 2F) ■ Facilities: Air conditioning, Wi-Fi, café corner, and restrooms

< Route >

Pearl Island & Toba Aquarium ~ (10min.) ~ Toba Marine Terminal ~ (15min.) ~ Dolphin Island (Port of call) ~ (25min.) ~

Pearl Island & Toba Aquarium ~ (10min.) ~ Toba Marine Terminal

■ Departure times: 9:30 - 15:30; *Additional trips may be added without prior notice during busy periods.

■ Closed: Late January to early February every year ■ Access: Approx. 9-minute walk from Kintetsu or JR Toba Station

■ Parking: Sadahama parking lot (fee required)



Toba Aquarium

The only aquarium in Japan where you can see Dugong.

The largest number of species in Japan! Toba Aquarium is one of the Japan's largest aquariums where you can see Dugongs and about 1,200 species of creatures. In particular, Dugongs which are the only ones in Japan, and sea otters which are popular for their adorable behavior, are a must-see. Shows by sea lion and walrus are held every day.



Picture provided by Toba Aquarium

- Admission: Adult: 2,800 yen, elementary/junior high school students: 1,600 yen, toddlers (3 years old or older): 800 yen
- Group discounts for a group of 25 or more people: Adult: 2,600 yen, elementary/junior high school students: 1,500 yen, toddlers (3 years old or older): 700 yen
- Closed/Open everyday
- Opening hours: 9:30 - 17:00 (Time is subject to change depending on the season. For details, please check the website.)
- Access: By Train: Approx. 10-minute walk from Kintetsu or JR Toba Station
- By car: About 15 minutes from Ise IC on Ise Expressway
- Parking Fee: 1,000 yen per day; *Same rate applies to buses.



Mikimoto Pearl Island

Pearl theme park related to Kokichi Mikimoto

Mikimoto Pearl Island is the island where Kokichi Mikimoto succeeded in cultivating pearls for the first time in the world, and currently serves as a theme park of pearls. There are the Kokichi Mikimoto Memorial Hall, a pearl museum, restaurants and shops. Visitors can also enjoy diving demonstrations by ama divers dressed in white beach clothes.



- Admission: Adult: 1,650 yen, Child (elementary and junior high school students): 820 yen
- Closed: 3 days from the second Tuesday in December
- Group discount for a group of 20 or more people: Adult: 1,320 yen, child: 660 yen
- Opening hours: 9:00 - 17:00 (The time is subject to change depending on the season.)
- Access: About 5 minute walk from Kintetsu/JR Toba Station.
- Parking: Mikimoto Parking, Island's parking, Iwasaki Parking
- Parking fee: 600 yen for 2 hours (200 yen for each additional hour)



Wedded Rocks · Futami Okitama Jinja

The rocks tied with a sacred shimenawa rope are a symbol of happy marriage.

Located offshore of Futamiura, an ablution site of the Ise Jingu, these rocks are dedicated to the deity Sarutahiko-no-Okami. Meoto Iwa wedded rocks, a pair of a large and a small rocks serving as a shrine gate to worship the offshore holy stone and the sunrise, are symbols of happy marriage and match-making since they are tied together with a shimenawa (sacred rope).



Married Rock Shinto ritual (Futami Meoto Iwa grand shimenawa-hanging ritual)

© Visit ISESHIMA Bureau

- Access: From Kintetsu/JR Ise Station or Kintetsu Ujiyamada Station, take a bus bound for Toba Bus Center or the Ise-Futami-Toba Sightseeing Bus (CAN Bus) and get off at the Meotoiwa higashi-guchi Stop. Approx. 5-minute walk.



Iseshima Skyline

At the top of Mt. Asama, you can enjoy spectacular views, footbaths, and gourmet food!

This is a 16-km driveway leading from Ise to Toba via Mt. Asama (Elevation: 555 m). At the open field of Mountain top, there are restaurants, shops, an observatory to enjoy a spectacular view of Ise Bay, an observatory footbath, and a retro red post box.



- Opening hours: 7:00 - 19:00
- *Times varies depending on the season.
- Closed: Open throughout the year
- Tolls: Motorcycle (Motorcycles of 125 cc or less are not allowed): 900 yen, light/standard vehicle: 1,270 yen, microbus: 3,210 yen, large chartered bus: 5,100 yen,
- Access: By train: About 20 minutes using a taxi from Kintetsu Isuzugawa Sta. or Kintetsu/JR Toba Sta. to the mountaintop observatory
- By car: About 5 minutes heading for Naiku from Ise Nishi IC of the Ise Expressway
- Parking capacity: 100 (free of charge)



Kaito Yumin Club DMC

Tours to discover the charm of local nature and people

Providing a wide variety of guided tours, including uninhabited island kayak tours and summer snorkeling tours to experience Toba's nature, as well as gourmet tours to interact with local people and craft experiences.



- Rate: Varies by experience
- Hours: 9:00 - 17:00
- Closed: Aug 13-15, Dec 30-Jan 3
- Access: Approx. 5-minute walk from Kintetsu/JR Toba Station.
- Parking: Available (Free, reservation required)



Ise Sea Paradise Aquarium & Ise Meoto Iwa Meoto Yokocho

Interact with animals at the "Zero-Distance Aquarium"

An aquarium themed around "interaction," where you can see Stellar sea lions and seals up close without fences, and even shake hands with otters. At the adjacent facility, Ise Meoto Iwa Meoto Yokocho, you can enjoy Ise's gourmet food and souvenir shopping.



- Admission: From 2,400 yen for adults, from 2,300 yen for seniors (65+), 1,200 yen for elementary school children/junior high students, and 600 yen for preschoolers (4+)
- Closed: Open year-round (*Closed occasionally for maintenance).
- Hours: Varies by day.
- Access: From Kintetsu/JR Ise Station or Kintetsu Ujiyamada Station, take a bus bound for Toba Bus Center or the Ise-Futami-Toba Sightseeing Bus (CAN Bus) and get off at the Meotoiwa higashi-guchi Stop.
- Parking Fee: 800 yen for 2 hours, 300 yen for 3 hours (200 yen for each additional hour thereafter).
- *Rates vary by day of the week and season.

Experience the spectacular view of Ago Bay

Yokoyama View Point

The Rias coast of Ago Bay and greenery islands are right in front of you!

Yokoyama View Point looks down the national famous rias coast of Ago Bay to the south. From its five observation decks, visitors can enjoy views of the graceful coastline and greenery islands on the tranquil sea. At the Yokoyama Tenku Café Terrace on the main observatory deck, visitors can enjoy panoramic views while drinking coffee, etc. Also, visitors can buy pearl souvenirs at the Yokoyama Visitor Center.



*Smoking is prohibited in all the Yokoyama View Point areas.

- Access: By train: About 40 minutes on foot or 10 minutes using a taxi from Kintetsu Ugata Station. By car: About 26 minutes from Tobaminami/Shiraki IC of the Daini Ise Road
- Parking capacity: 28 at the mountaintop parking lot (P2), 87 (including 3 bus spaces) at Sozo-no-Mori Yokoyama parking lot (P1), 20 at Okunono parking lot (P3) (all are free of charge)
- *Since large- and medium-sized buses and motorcycles (including bicycles) are not allowed to park at the mountaintop parking lot (P2), please use the Sozo-no-Mori Yokoyama parking lot.

Shima Mediterranean Village

An exotic resort where white-walled buildings stand out against the blue sky.

An experiential resort hotel replicating a Mediterranean coastal town. Visitors can enjoy strolling through the exotic streets and savoring modern Spanish Basque cuisine on a day trip.



- Admission for day visitors: 700 yen for adults (junior high school students and older) and 300 yen for elementary schoolchildren
- Experience rate: Varies by experience ■ Hours: 10:00 - 17:00 (Last entry 16:30)
- Closed: Open year-round (*Closed occasionally for maintenance).
- Access: By Train: Approx. 15 minutes from Kintetsu Ugata Station by taxi or shuttle bus. By Car: Approx. 50 minutes from Ise Nishi IC on the Ise Expressway. ■ Parking: Available (Free)

Kirigaki Observatory

A view point for the beautiful sunset glowing in Ago Bay

Located in Tomoyama Park, this west-facing observatory offers a view of the sunset over Ago Bay on the front. The view of the sea gradually turning orange and the greenery islands changing into silhouettes from moment to moment is beautiful beyond description.



- Access: By train: About 20 minutes using a taxi from Kintetsu Ugata Sta. By car: About 35 minutes from Tobaminami/Shiraki IC of Daini Ise Road
- Parking: Available (Free)

Ise-Shima Tourism

A rare opportunity to dive into the sea with authentic Ama (traditional female divers) is also available.

Unique experience plans to encounter the culture and customs of Ise-Shima exclusively. Enjoy sea-based activities and various cruise plans.



DMC

- Experience Rate: Varies by plan
- Hours: 9:30 - 17:00 ■ Closed: Irregular holidays
- Closed: Open year-round (*Closed occasionally for maintenance).
- Access: Approx. 1-minute walk from Kintetsu Kashikojima Station (Entrada Kashikojima).
- Parking: Available (Free)



Kashikojima España Cruise

Elegant cruising of Ago Bay where pearl rafts are floating

The Esperanza, a sightseeing sailboat elegantly cruises the Ago Bay, a land sea where pearls and oysters are cultured. On the open deck, passengers can see the beautiful inlet and pearl rafts in close while enjoying the pleasant sea breeze.



Special guest room "Isabella"



Timetable

From Kashikojima	9:30	10:30	11:30	13:30	14:30	15:30
------------------	------	-------	-------	-------	-------	-------

* Schedules are subject to change or suspend in accordance with weather conditions and other circumstances.
* The Esperanza is scheduled to be out of service for about 2 weeks in January - February due to periodic inspections. During the period when Esperanza is out of service, an alternative vessel (small boat) will be used.

Pearl-picking experience

Pearl Miki



Visitors can make original straps and pendants by extracting pearls from Akoya oysters on a pearl cultivation raft floating in Ago Bay. Also, visitors can learn about the production process of cultured pearls.

- Fee: Pearl-picking & accessory-making: From 5,000 yen per person (including fittings) 3,000 yen per pearl extraction + from 2,000 yen for fittings (*Pearl extraction only is not available).
- Opening hours: 10:00 - 15:00 (reservation required)
- *Program requires 60-90 minutes (Time required is negotiable depending on the number of participants.) The limit of participants per program is 20.
- Closed: Wednesdays and Thursdays (Negotiable for groups)
- Access: By train: Take a bus from Kintetsu Ugata Station and about 10 minute walk from Goza Port bus stop. By Car: About 65 minutes from Ise Nishi IC of the Ise Expressway via Ise Road.
- Parking: Available (Free)

Shinju no Sato - Pearl jewelry crafting experience



Lift a net of Akoya oysters from Ago Bay, choose your favorite, and extract your own pearl. After polishing it, you can take it home or use it to create your own jewelry.

- Rate: Pearl extraction: From 2,200 yen per Akoya oyster; Pearl jewelry crafting: 400 yen per pearl + from 1,000 yen for fittings
- Hours: 9:30 - 17:00 (Reservation required) *Takes 30-60 min.
- Closed: Irregular holidays (Please check the website).
- Access: By Train: From Kintetsu Ugata Station, take a bus to the Koshika Stop (shuttle service available from the bus stop). By Car: Approx. 45 minutes from Shiraki IC via Daini Ise Road.
- Parking: Available (Free)

Katsubushi smoking hut tour



Katsuo no Tenpaku "Katsuo Ibushi Goya"

At this hut overlooking the Pacific Ocean on the west of Cape Daiozaki, craftsmen are making bonito flakes by the traditional method of smoking using Ubamegashi woods (Quercus phillyraeoides) and Binchotan charcoal. At the end of the tour, visitors can taste "okaka gohan (white rice topped with bonito flakes)."

- Reservations: Reservation-only (Reservations must be made 5 days prior to the day of visit.)
- Limit of participants: Min. 5 to max. 40 (To be replaced or divided)
- *It is recommended for a group of 20 or more to divide into small groups. (*The maximum number of people is negotiable.)
- Time required: 1 hour *It varies in accordance with seasons. October - May (1) 11:00 - (2) 13:00 - June-September: (1) 10:00 - only
- Fee: Adult: 3,500 yen for adults (ages 16+), 2,500 yen for children (ages 15 and under)
- *Recommended for ages 10 and up.
- Closed: Wednesdays, Sundays, August 12-16, and December 1-January 10
- Access: Take a bus from Kintetsu Ugata Sta. and about 10 minute walk from "Daiozaki Today" bus stop
- Parking capacity: 5 (free of charge) *Large- and medium-sized buses must park at the Daiozaki Tourist Parking Lot (fee required).



Point

1 Inspired by a ship known as carrack from the Spanish Exploration Age

On the Esperanza, which means 'hope' in Spanish, there is a special guest room.



2 A moment onboard of cruising calm waves while enjoying a view of the beautiful rias coast

Seeing the rias coast and pearl cultivation rafts in very close is an attraction available only from a ship.



3 A wide variety of menu items are available at the onboard café corner.

The café corner sells beverages, alcoholic drinks, light meals, and snacks.



With a charter plan, you can do....



Stargazing cruise

You can view the starry sky from the ship through guidance of a starry sky guide.

Onboard party

We can create an enjoyable party in accordance with purposes.

- Fare: Adult: 1,900 yen, Child: 1,100 yen
- Group discount: 10% for a group of 15-99, 20% for a group of 100-299, 30% for a group of 300 or more
- Seating capacity: 250 (82 seats on the 1st floor and 64 seats on the 2nd floor)
- Time required: About 50 minutes
- Facilities: Air conditioning, Wi-Fi, café corner, and restrooms
- Special guest room "Isabella"
- Rate: 500 yen for adults (junior high school students and older) / 300 yen for children (elementary schoolchildren and younger)
- Capacity: 20 people; Private room rate: 10,000 yen per room (Capacity: 20 people)
- Applications: Reservations are required for private use.

For applications and inquiries: Kashikojima Office; Tel.: +81-599-43-1023

<Route>
Departing from Kashikojima Port ~ Ago Bay cruising (50 min.) ~ Arriving at Kashikojima Port

- Departure time: 9:30-15:30
- Closed: The ship is scheduled to be out of service for about 2 weeks in January - February due to periodic inspections. During the period when the ship is out of service, an alternative vessel (small boat) will be used.
- Access: About 2 minute walk from Kintetsu Kashikojima Station
- Parking: Available. Chartered buses are allowed to park (Free).





Shima Green Adventure

Relieve yourself in natural environment to free your body and mind!

Glamping & attraction complex resort utilizing the magnificent natural environment of a former golf course. From authentic attractions like Japan's longest* zipline, one of the world's largest athletic towers, and outdoor survival games using infrared systems, to drone piloting and grass sledding for small children, guests of all generations can enjoy themselves.

Glamping here is a resort experience where you can enjoy a luxurious time while taking in Shima's beautiful sunsets—chosen as one of the top 100 sunset spots in Japan—as well as the star-filled sky and a lush carpet of lawn. At the Luxury Building, which features a private pool and a barrel sauna, you can experience lōlyty with organic aromas and enjoy an open-air bath.

The Dog-run Villas, each featuring a private dog run of approximately 1,000 m², offer three types of domes and cocoon tents, including premium suites, for a worry-free stay with your dog. Additionally, the Regular Villas come equipped with tent saunas for a relaxing "totonoi" (refreshing) experience in nature, featuring three dome styles: Terracotta, Botanical, and Modern Black. You can choose from these three distinct types of rooms based on your needs and enjoy a BBQ with carefully selected ingredients under the starry sky.

*Japan's longest face-down-positioned zipline (surveyed by Kintetsu Real Estate in May 2024)



- Fare: Field Pass Adult: 3,300 yen, Child/Senior: 2,200 yen
- *Some attractions require additional Adventure Pass.
- Access: By train: About 10 minutes using free shuttle bus from Kintetsu Ugata Sta.
By Car: About 20 minutes from Tobaminami/Shiraki IC on the Daini Ise Road
- Parking capacity: 378
- Parking fee: Standard vehicle: 1,000 yen, motorcycle: 500 yen, bicycle: free, bus: 2,000 yen



Shima Nature School

Shima Nature School for enjoying Shima's land sea

Ago Bay, known for its pearl cultivation, is a land sea by which people live their lives. Shima Nature School in Tomoyama Park located facing Ago Bay, offers various nature programs to experience the land sea. Popular activities include sea kayaking and water ball, as well as craft-making.

- Fee: Depends on the program
- Opening hours: 9:00-17:00
- Closed: Irregular
- Access: By train: About 30 minutes using taxi from Kintetsu Ugata Sta.
By car: About 60 minutes from Ise Nishi IC on the Ise Expressway.
- Parking capacity: About 100 (Free)



Kintetsu Kashikojima Country Club

No. of Holes 18 holes Par 72 Course yardage 6,959 yards

Official Tournaments of Ladies Professional Golf Association
Mizuno Classic, Ise-Shima (2006-2014)
TOTO Japan Classic, Ise-Shima (2015)

This is a prestigious course built by utilizing the magnificent natural settings.

This is a historic golf course opened in 1969. This championship course was created by a famous golf course designer Osamu Ueda. He set elevated greens and its famous Alison Bunker by skillfully utilizing the rias coastline of Ago Bay and natural ups-and-downs. The clubhouse with relaxed atmosphere, which is harmonized with the natural surroundings, offers a relaxing time, away from the hustle and bustle of daily life. All carts are equipped with air conditioning and seat heaters.

Stay & Play Plans are available, allowing you to enjoy golf and a relaxing stay at Kintetsu Group hotels.



- Access: By train: About 5 minutes using a taxi from Kintetsu Kashikojima Station
By Car: About 40 minutes from Ise Nishi IC on the Ise Expressway
- Parking capacity: 155 (Free)



Kintetsu Group accommodations are located near the golf course, making them convenient for overnight golf trips.



NEMU GOLF CLUB

No. of Holes 18 holes Par 72 Course yardage 6,768 yards

Seaside resort golf to enjoy in Ise-Shima

The NEMU GOLF CLUB condenses all the best elements of a seaside course. It features a course layout that skillfully utilizes the beautiful landscape and intricate coastline. The club also boasts extensive practice facilities, including a 300-yard driving range and one of Japan's largest short-game areas covering 7,000 m².

- Access: By train: About 15 minutes using a taxi from Kintetsu Ugata Station, or About 20 minutes using free shuttle bus from Kintetsu Kashikojima Station. (Reservation required)
- By Car: About 50 minutes from Tamaki IC on the Ise Expressway
- Parking capacity: 80 (Free)



ISE-SHIMA Country Club

No. of Holes 18 holes Par 72 Course yardage 6,405 yards

Variety of highly strategic holes utilizing natural forests

The course layout, for which rich natural forests and geographical features are fully incorporated, is rich in gentle and graceful curves and very strategic. Visitors can enjoy round play while feeling the sea breeze from Matoya Bay. Also visitors can enjoy the depth of golf since the greens of bent-grass create exquisite ups-and-downs.

- Access By train: About 15 minutes using a taxi from Kintetsu Ugata Sta.
By Car: About 25 minutes from Tobaminami/Shiraki IC on the Daini Ise Road
- Parking capacity: 120 (Free)

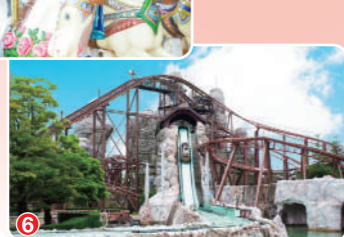


Shima Spain Village

A theme park where you can experience the country of passion, Spain

The theme park, created by reproducing typical Spanish buildings and cityscapes, is filled with photogenic spots. Visitors can experience the wonderful things about Spain, a country of passion, through various attractions, shows by Spanish entertainers, authentic Spanish foods and goods.

Attractions



Both adults and children can enjoy various attractions.

From thrilling rollercoasters to attractions steeped in fantasy which a family can enjoy, and a museum that allow visitors to experience Spanish history and culture, there are about 30 attractions that both children and adults can enjoy.

- 1 PYRENEES
- 2 GRAN MONTSERRAT
- 3 GAUDÍ CARROUSEL
- 4 Steam Roller Coaster IRON BULL
- 5 BATALLA DEL ALCÁZAR "ADELANTE"
- 6 SPLASH MONTSERRAT
- 7 FELIZ CRUISE

Entertainment

Cheerful entertainers and characters entertain guests!

There are various shows to entertain park guests, including a passionate and powerful flamenco show performed by authentic Spanish dancers, a parade and street musical where visitors can enjoy themselves with Spanish entertainers, and a musical featuring all the park characters.



Parque España Parade "España Carnival 'Buen Viaje'"

Gorgeous floats and dance take visitors to colorful and pop "wonderful journey to Spain." At the end of the journey, there is a dance time that guests can enjoy together!



Street musical



Characters' musical show



Flamenco show



Characters' greetings

Open in night hours during Golden Week and summer vacation season!

Night parade, projection-mapping and night spectacles by collaborating powerful fireworks with music are held.



Photogenic

There are many photo spots where visitors feel beautiful exoticism.

In the park, visitors will find many photogenic spots where they feel like taking photos, such as white walls against the blue sky, colorful flowers, open space whose art works are eye-catching, and exotic streets.



You can be photo-taken and walk around in the park in a Flamenco costume.



Gourmet & shopping

Variety of Spanish foods, products, and Ise Shima souvenirs

There are many gourmet foods, from paella and other authentic Spanish foods to casual fast food, churros suitable for eating while walking, and even Japanese food. The store offers a wide variety of original character goods, Spanish confections and products, and Ise Shima specialties.



- Passport price
Adult: 5,900 yen, Junior: 4,700 yen,
Child: 4,100 yen, Senior: 4,700 yen
*Group discount is available.
(Advance application required)
- Access: By train: About 13 minutes using direct bus from Kintetsu Ugata Sta.
By car: About 20 minutes from Tobaminami/ Shiraki IC of the Daini Ise Road
- Parking capacity: 4,200
- Parking fee: 1,300 yen for a standard car/per entry (as of February 2026)





- Total number of rooms: 252
- Maximum capacity: 512 people
- Parking capacity: 170 (Free)
- Access: By train: About 13 minutes using bus from Kintetsu Ugata Station
- By car: About 40 minutes from Ise Nishi IC of Ise Expressway
- It is convenient to come via the Daini Ise Road, which is directly connected to the Ise Expressway.

Hotel Shima Spain Mura



Continue to dream at a Resort Hotel filled with an air of exoticism of Southern Spain

Shima Spain Village is a resort complex consisting of a theme park, hotel, and hot springs.

Guests can enjoy an elegant hotel resort in a building filled with a southern Spanish atmosphere while cherishing the memory of the theme park.



By just strolling through the hotel, you will feel like staying at a resort

Once you enter the hotel, you will feel like staying at a resort in Spain, such as the lobby suggestive of a church in Andalusia of southern Spain, the patio which is a place of relaxation for the Spanish, and the guest room buildings designed to resemble three towns surrounding the patio.



Standard Room (40.5 m²)

Relax in a room filled with Spanish atmosphere!

We offer various room styles to suit your needs, including Standard Rooms with a full Spanish atmosphere, resort-style Superior Rooms, Character Rooms that bring the world of Shima Spain Village to life, and Group Rooms perfect for larger parties.

Adequate facilities to enhance your hotel stay

There are facilities which guests can enjoy during their stay, including the garden pool (summer season only) and the indoor pool, and a karaoke room for max. 10 people, etc.



Patio



Garden pool



From authentic Spanish cuisine to luxurious kaiseki cuisine

We offer authentic Spanish cuisine that our chef specialize in, such as a course menu which includes Spanish-style hors d'oeuvres and paella. Also, guests can choose Japanese kaiseki or Japanese & Western buffet to which a variety of seafood of Ise Shima is used.



Western-style course (Image)



Japanese kaiseki cuisine (Image)

Five banquet halls of various sizes

The hotel has five banquet halls of different sizes, including the 700 m² grand ballroom "España," "Andalucia," and "Cadiz." In accordance with the number of people and the purpose, "España" and "Andalucia" can be divided into two separate spaces.



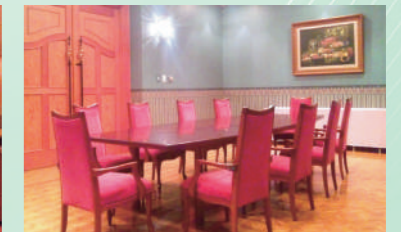
ESPAÑA (full size use): Formal seating layout



ANDALUCIA: Formal seating layout



CADIZ



MIJAS

Room name	Area (m ²)	Ceiling height (m)	Capacity (person)*It may not be available in some cases						
			Conference room			Banquet room			
			Theater style	Classroom style	Square shape style	Standing buffet	Seated buffet	Formal seating	Japanese-style
ESPAÑA (Whole room)	700	5.8	450	300	—	450	300	350	—
ESPAÑA (When the room is divided into 390 m ²)	390		200	120	—	—	100	150	—
ESPAÑA (When the room is divided into 310 m ²)	310		120	90	—	—	80	100	—
ANDALUCIA (When the room is divided into two: 88 m ²)	176	3.0	80	60	—	—	50	60	—
CADIZ	128		70	50	—	—	50	50	—
MALAGA	70		40	20	—	—	20	20	—
MIJAS	40		A special table for the room:10 seats			—	—	—	—

Natural hot spring "Himawari-no-Yu" with a superb view

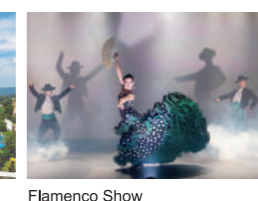


Ise-Shima Onsen Shima Spain Village
The Himawari-no-Yu hot spring
 Overlooking Izonoura Bay, the Himawari-no-Yu is an alkaline simple hot spring that smoothens skin after bathing. You can also enjoy a beautiful sunset view from the open-air bath.

Activities that guests can feel the passion and smiles of Spain



Pyrenees



Flamenco Show

The hot spring is directly connected to the adjacent theme park Parque España by a connecting entrance. The park is full of unique attractions, spectacular parades, authentic flamenco performances, and much more.

Shima Spain Village
 *For details, see p. 11.



A view of Ago Bay and high-quality natural hot springs will heal guests!

Asanagi-no-Yu and Yunagi-no-Yu of Ise Shima hot springs are the first hot springs in Kashikojima for which water is drawn from the spring source. Their water is thick and has excellent moisture retention effect. From the garden open-air baths, guests can enjoy a view of the sea ocean very close enough to almost reach. At the open-air baths, pearls of Ago Bay are embedded in various places.



Garden open-air bath (Yunagi-no-Yu)



Garden open-air bath (Asanagi-no-Yu)



Observation large public bath

The baths reflect different scenes in the morning, afternoon, evening, and night.



Gorgeous kaiseki cuisine serving plenty of seafood

For dinner, we offer kaiseki cuisine colorfully serving seasonal food. We entertain guests from the heart with gorgeous seafood, such as lobsters and abalones.



Dinner (Image)



(Image)

Recommended spots in the hotel

Lobby & wide-view garden of Kayo building
These are viewing spots where guests can enjoy a panoramic view of Ago Bay.

Astro-bowl
A retro bowling alley in a nostalgic atmosphere

Kashikojima Hojoen



Japanese-style resort where a view of Ago Bay is spreading out

At the Japanese-style hotel whose interior is spacious, there are restaurants, lounge, and others, which are very attractive.

Guests can enjoy an elegant moment surrounded by the seascape of Ago Bay, which changes over time.



- Total number of rooms: 165 ■ Maximum capacity: 754 people
- Parking capacity: 120 (free of charge) (4 EV charging stations available)
- Access: By train: About 7 minutes on foot from Kintetsu Kashikojima Station (Free shuttle bus service available)

By car: About 40 minutes from Tobaminami/Ise-nishi IC of Ise Expressway.

Hospitality with guest rooms having nice view

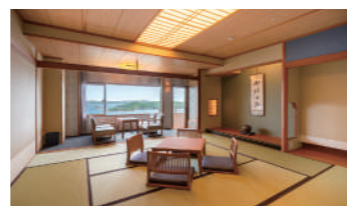
From all guest rooms in the Kayo and Sanyo Wings, guests can enjoy a relaxing view of the beautiful Ago Bay. The upper floors of the Kayo Wing feature premium levels with enhanced amenities and services. We take particular pride in our guest rooms on the top floor, which feature open-air baths and a breathtaking seascape from 35 meters above the ground.



Kayo Wing, suite floor "Suikai": Japanese-Western room with private open-air bath



Sanyo Wing, standard floor: Traditional Japanese room (8-10 tatami mats)



Kayo Wing, superior floor "Rankel": Traditional Japanese room (12.5 tatami mats)

From party to seminar, we support all types of gatherings with a variety of halls and rooms.

Since there are banquet halls, convention halls, and conference rooms of all sizes, we can meet customers' needs: conferences, training sessions, standing buffet parties, etc. Layouts can be changed to suit each occasion.

Kayo no ma

This spacious 600 m² room is suitable for training seminars, lectures, receptions, and other parties. Layout can be changed flexibly.



Hojo no ma

This is a large banquet hall of 600 tatami mat size with a stage, and can accommodate max. 360 people. This hall is the largest in Ise Shima area. The hall can be divided.



Small banquet hall Manryo

This is a small banquet hall that can accommodate min. 10 people. There is also another small banquet hall where chairs and tables can be used instead of tatami and tray, to suit customers' needs.



Lounge Kirameki

The Kirameki lounge, where its theater-style stage and seats cause the excitement, can accommodate max. 80 people. It is recommended for after-parties.

Room name	Area (m ²)	Ceiling height (m)	Capacity (person)*It may not be available in some cases						
			Conference room			Banquet room			
			Theater style	Classroom style	Square shape style	Standing buffet	Seated buffet	Formal seating	Japanese-style
HOJO NO MA (can be divided)	600 ^{tatami mats}	—	—	—	—	—	—	—	360
MISAKI NO MA (can be divided)	200 ^{tatami mats}	—	—	—	—	—	—	—	120
KAYO NO MA (can be divided)	600	4.2	600	360	100	400	250	250	—
MANRYO	31.5 ^{tatami mats}	—	—	—	—	—	—	—	18
MARGARET (can be divided)	166	3.0	120	60	48	—	—	—	—
OLIVE	39	2.8	30	—	24	—	—	—	—
PANSY	37		30	—	24	—	—	—	—
QUINCE	37		30	—	24	—	—	—	—
ROSE	37		30	—	24	—	—	—	—

*Japanese cuisine will be served in the formal seating. *HOJO NO MA is only available for Japanese style banquet.

*MARGARET, OLIVE, PANSY, QUINCE and ROSE are meeting rooms.

*The room can be combined with OLIVE, PANSY, QUINCE, or ROSE. *In addition, there are nine small banquet rooms for 10 to 20 persons.

Shima Kanko Hotel



THE BAYSUITES

THE CLUB

THE CLASSIC

A luxury resort carrying on history and tradition

Located on a hilltop overlooking Ago Bay where its famous rias coastlines are beautiful, Shima Kanko Hotel has a long history as the "Guest House of Ise-Shima."
At the hotel served as the main venue of the G7 2016 Ise-Shima Summit, the heads of member countries shared precious time.



THE CLASSIC

- Total number of rooms: 112 ■ Maximum capacity: 224 guests
- Parking capacity: 66 (free of charge)
- Access: By train: About 5 minutes on foot from Kintetsu Kashikojima Sta. (Approx. 2 min. by free shuttle bus)
- By car: About 40 minutes from Ise Nishi IC of Ise Expressway

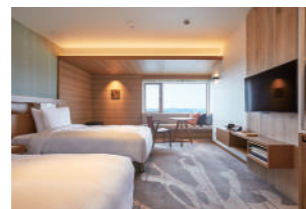
Opened in 1951 as the first western-style hotel after World War II, it has been hosting guests from Japan and abroad, including members of the Imperial Family. The Classic places importance on "harmony with the nature of Ise Shima." Guests can deeply feel a sense of relaxation in a dignified and prestigious atmosphere.

Warm guest rooms for a relaxed stay

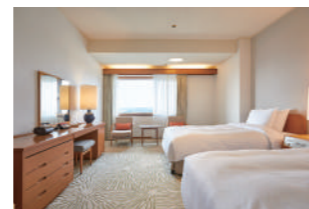
Our guest rooms, inspired by the natural beauty of Ise-Shima, feature warm interiors that harmonize with the scenery of Ago Bay. We provide a wide variety of room types, all possessing a timeless, classical charm.



Ambassador Suite (57m²)



Premium Twin (36m²)



Comfort Twin (28m²)

Long-established tradition, "French seafood cuisine"

Restaurant La Mer The Classic offers our signature traditional French seafood cuisine, a true hallmark of the hotel. Our legendary specialties, featuring abalone and spiny lobster, have remained timeless favorites loved for generations.



Cuisine (image)



Restaurant La Mer the Classic (image of interior)



Room Wako within the restaurant can be used as a private room (For 20-40 persons)



The restaurant features the masterpiece "No-asobi" (Picnic) by Léonard Tsuguharu Foujita.

Enjoy relaxed time at the exclusive lounge for staying guests

Staying guests can use the guest lounge, which overlooks Ago Bay. Guests can enjoy snacks and drinks on a self-serve basis, and use its attached reading room and listening room.



The Classic's Guest Lounge (Reading Room (left) and Terrace (right))



Suitable for commemorative parties and business occasions

The main banquet hall, "SHINJYU", is a flexible space suitable for everything from seated dining to seminars, meetings, parties, and ceremonies. It can also be divided into three smaller halls—Shin, Zen, and Bi—with a stage available in the Shin section.



SHINJYU



Conference layout



Room name	Area (m ²)	Ceiling height (m)	Capacity (person) *1 may not be available in some cases						
			Conference room			Banquet room			
			Theater style	Classroom style	Square shape style	Standing buffet	Seated buffet	Format seating	Japanese-style
SHINJYU	555.1	4.2	750	252	—	300	—	224	—
(Shin)	234.8		300	112	—	120	—	96	—
(Zen)	167.4		156	54	—	70	—	64	—
(Bi)	152.9		156	54	—	70	—	64	—



THE BAYSUITES

- Total number of rooms: 50 ■ Maximum capacity: 100 people
- Parking capacity: 49 (free of charge)
- Access: By train: About 10 minute walk from Kintetsu Kashikojima Sta. (3 minutes by pickup car, reservation required)
- By car: 40 minutes from Ise Nishi IC of Ise Expressway

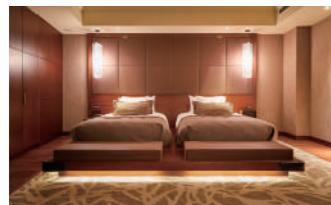
Luxury suite hotel for grownups, located surrounded by Ago Bay where pearl cultivation rafts are floating. All rooms are suites of over 100 m² in size. Guests can relax in spaces equipped with carefully selected furniture.

Suite rooms of Japanese tradition mixed with modern design

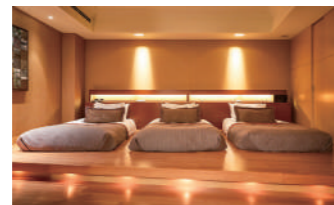
Featuring balconies that open onto the lush nature of Ise-Shima National Park, these relaxing spaces are adorned with carefully selected furnishings. The "FUTON" Suite is also available for parties of up to three.



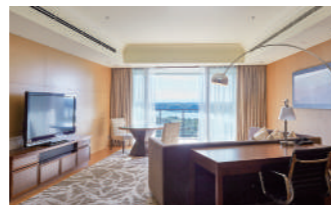
Corner Suite (110 m²)



Superior Suite (100 m²)



FUTON Suite (100 m²)



The same living rooms for Superior Suite and FUTON Suite

Guest lounge where guests forget time while enjoying a panoramic view of Ise Shima

The guest-only lounge on the top floor offers a self-service selection of snacks and drinks for your enjoyment. The view from the adjacent rooftop garden is often described as the quintessential Japanese landscape—it is the very spot where G7 leaders gathered for their group photo during the Ise-Shima Summit.



The Baysuites guest lounge

Taste "Ise-Shima Gastronomy" consisting mainly of Mie foods

French Restaurant La Mer serves our signature "French Seafood Cuisine," featuring the Executive Chef's most imaginative and exquisite creations. At Hamayu, guests can enjoy Japanese cuisine that beautifully showcases the finest seasonal ingredients.



French Restaurant La Mer (image of interior)



Food (image)



Japanese restaurant Hamayu (image of interior)



Cuisine (image)



THE CLUB

Inside the hotel building that retains the appearance of the Shima Kanko Hotel when it first opened, there are exhibits introducing the history of the hotel, a tea ceremony room that retains the original feature, two restaurants, and a conference room. Surrounded by a lawn garden, there is also a photo point where the G7 leaders have lined up and taken photo, with the building in the background.

Gourmet food and afternoon tea in a historic building

At the Café & Wine Bar Lien which still retains the large beams and lighting from its opening, guests can enjoy coffee and food while viewing the garden. At the Teppanyaki Restaurant Yamabuki, the chef grills seafood and mountain-food of the season in front of the guests.



Café & Wine Bar Lien (image of interior)



Teppanyaki Restaurant Yamabuki (image)

G7 Ise-Shima Summit Gallery and Photo Spot

In the lobby on the second floor of THE CLUB, tables used for the G7 summit meetings, autographs of the heads of member countries, and photo panels showing detailed description of the Summit are displayed. Guests are free to look around.



Small banquet rooms suitable for private gatherings

We have three small banquet halls HAGI, TSUBAKI, and KAEDE to meet various requests for small meetings and dinners. These spaces are recommended for private gatherings.



Function Room



Image of a formal dinner



Image of conference

Room name (Function room)	Area (m ²)	Ceiling height (m)	Capacity (person) *1 may not be available in some cases						
			Conference room			Banquet room			
			Theater style	Classroom style	Square shape style	Standing buffet	Seated buffet	Formal seating	Japanese-style
HAGI	60.7	2.6	60	16	—	24	—	24	—
TSUBAKI	52.7		40	12	—	20	—	20	—
KAEDE	60.7		60	16	—	24	—	20	—

Many activities exclusive to staying guests

Staying guests can participate in a variety of indoor and outdoor activities, such as early-morning yoga for relaxation, Ago Bay cruises, stargazing guided event of the Kashikojima night sky.

*The same activities are available at The Classic and The Baysuites.



Lounge Cruise Shima



Yoga for relaxation



Stargazing event



Ise Katagami

*More activities are available.

Two meeting rooms overlooking a sunlit green garden



Fuji

Room name (Function room)	Area (m ²)	Ceiling height (m)	Capacity (person) *1 may not be available in some cases						
			Conference room			Banquet room			
			Theater style	Classroom style	Square shape style	Standing buffet	Seated buffet	Formal seating	Japanese-style
FUJI	74	2.4	24	24	—	—	—	20	—
SAKURA	40		12	12	—	—	—	8	—



Miyako Resort Shima Bayside Terrace



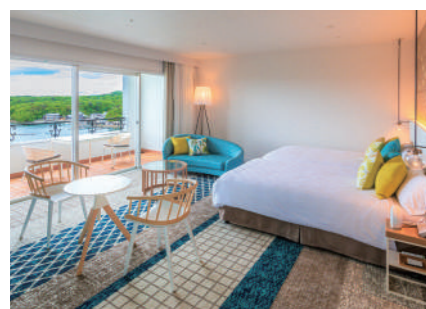
An exotic hotel where guests can feel like a vacation

The Spanish-style building and the luxurious space overlook Ago Bay in front. Guests can forget their busy daily life and time, and relax as if staying at an overseas resort.

- Total number of rooms: 108 ■ Maximum capacity: 360 people
- Parking capacity: 60 (free of charge)
- Access: By train: About 7 minutes using car from Kintetsu Kashikojima Sta. (Complimentary shuttle service available)
By car: About 40 minutes from Ise Nishi IC of Ise Expressway

Individual guest rooms where a sea breeze is blowing

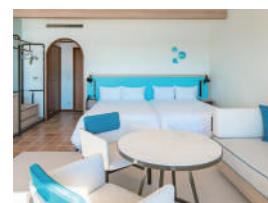
When you open a window of the stylish concept room, all of which are equipped with terrace, a picturesque landscape stretches out. At individual guest room, including ones overlooking the glitter of Ago Bay and the pool and one at the Garden Wing where seasonal flowers and greenery are beautiful, guests can feel the rich nature of Ise Shima.



Superior Twin (40.5 m²)



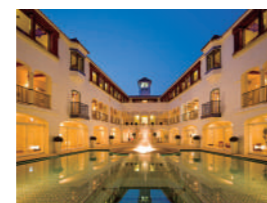
Garden Wing, Garden Twin (40.5 m²)



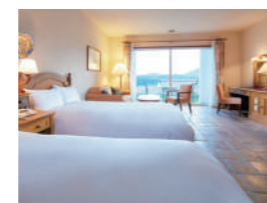
Ocean Wing, Ocean Twin (40.5 m²)



Ocean Wing, Suite (87.0 m²)



Ocean Patio



Villa (85.0 m²)



Appearance of Villa

*Also, there are 2 Doggy Rooms and 3 Deluxe Twin Rooms.

Taste quality French and Japanese kaiseki

Southern European-style French cuisine that uses seasonal food, and Japanese kaiseki that uses a variety of seafood and seasonal vegetables: Both offer exquisite tastes created by fresh Ise Shima food.



French cuisine (image)



Japanese Kaiseki (image)

Poolside barbecue restaurant
The restaurant can be rent out in accordance with dates and number of guests.
(Open seasonally, please inquire)



Libera (image)



A picturesque resort space in every corner

The white walls shining in the sun and the orange Spanish tiles are inspired by "Costa del Sol." Within the expansive premises, there are Garden Patio and Café Terrace, creating a rich resort life for grownups.



Tennis court



Activities allowing your body to entirely feel the power of nature



Next to the hotel, there is the Kintetsu Kashikojima Country Club and we recommend the plan of playing golf the day after training session or conference.
*For more details, please see page 10.

From private to business, we offer comfortable spaces for every occasion.

We have a variety of spaces for various occasions, including training sessions, dinners, bridal events, and seminars. The white-base comfortable space is perfect for off-site meetings. We support you to have a meaningful time according to your purpose.



ARC-EN-CIEL, formal dinner layout

The reception at a French restaurant overlooking Ago Bay

Guests can spend wonderful time in having conversation while enjoying the chef's Southern European-style French cuisine made with seasonal food.



French restaurant h d'or



ARC-EN-CIEL, school layout



Meeting room

Banquet Room ARC-EN-CIEL

The ARC-EN-CIEL is a multipurpose place for conferences, meetings, and other business communications, as well as a private banquet room.

Room name	Area (m ²)	Ceiling height (m)	Capacity (person) *It may not be available in some cases						
			Conference room			Banquet room			
			Theater style	Classroom style	Square shape style	Standing buffet	Seated buffet	Formal seating	Japanese-style
ARC-EN-CIEL	140	2.8	60	60	42	60	40	60	—
MEETING ROOM	47.3	2.6	30	20	20	—	—	—	—



Miyako Resort Okushima Aqua Forest



Relax and enjoy a special time in nature

Free from busy daily life in a greenery "paradise" surrounded by Ago Bay.

The sea, the forest, the star-filled sky.... The resort hotel satisfying guests with a sense of harmonization with nature.

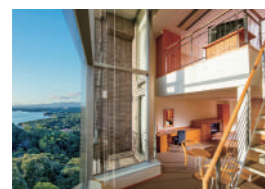
- Total number of rooms: 127 ■ Maximum capacity: 352 people
- Parking capacity: 230 (free of charge)
- Access: By train: About 25 minutes using car from Kintetsu Kashikojima Station (Complimentary shuttle bus available)
- By car: About 60 minutes from Ise Nishi IC of Ise Expressway

You can choose a room to suit your situation!

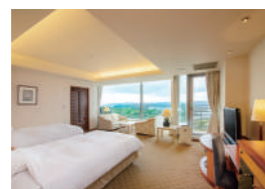
Guests can choose a room from the hotel building, the forest cottage, and the pet cottage. The hotel building has 9 types of rooms overlooking Ago Bay, of which marionette-style and Japanese Western mixed style rooms are good for families. The pet cottage where guests can stay with their dogs and the forest cottage are quiet and private spaces.



Regular Twin Room (37 m²)



Maisonette Style Room (58 m²)



Deluxe Twin Room (47 m²)



Japanese style Room (10 tatami mats)



Japanese Western Mixed Style Room (66 m²)



Cottage/Bungalow (60 m²)

*Also, there are one Accessible Room and one Aqua Vista Room.

Refresh yourself in natural hot springs and rich nature

At Ise-Shima Hot Springs "Tomoyama-no-yu" and the amusement pool, you can experience the healing power of water in a lush natural setting. A stroll along the hotel's promenade will take you to a prime vantage point overlooking Ago Bay. The estate also features the observatory "Tenmonkan", where a professional-grade 50cm telescope awaits to show you the starlit skies of Shima.



Ise Shima Hot Springs "Tomoyama-no-yu"



Indoor swimming pool Aquapalace



Tenmonkan



Promenade on the cape

Enjoy gorgeous seafood for dinner

Taste "kaiseki" cuisine featuring luxurious seafood, such as lobsters and abalones at the dinner table. Also, Japanese-, Western-, and Chinese- buffet featuring more than 40 kinds of food, including seafood, local specialties, and beef steaks, is available.



Kaiseki (image)



Buffet (image)

Three banquet rooms to be chosen depending on customers' needs

We have one of the largest banquet halls in a resort hotel. Also, there are both Western-style and Japanese-style medium-size banquet rooms that can be divided for a small group. We are well equipped to meet all kinds of requests, from seminars and parties to small group dinners for families, etc.



SAKURA NO MA

Equipped with a dedicated lobby and elevator, this large banquet hall is suitable for parties, lectures, and many others. Roll-back style is possible.



Roll back style

SHIMA NO MA

This Western-style banquet hall can be used for trainings and seminars. The hall can accommodate a dinner/lunch gathering, ranging from a small group to maximum 40 people. Even when it is divided into small rooms, a space of over 80m² can be ensured.



KATSURA NO MA

Here, parties can be held in the relaxed atmosphere of Japanese-style room. As this hall can be divided into three smaller banquet room, Katsura, Kaede, and Kiri, each of which is suitable for parties with children.



Room name	Area (m ²)	Ceiling height (m)	Capacity (person) *It may not be available in some cases							
			Conference room			Banquet room				
			Theater style	Classroom style	Square shape style	Standing buffet	Seated buffet	Formal seating	Japanese-style	
SAKURA NO MA (Whole room) (*1)	398	4.5	374	222	68	180	120	120	—	
SAKURA NO MA (East)(with a stage (a half of the room size))	196		176	60	42	80	60	64	—	
SAKURA NO MA (West) (a half of the room size)	196		176	60	42	80	60	64	—	
SHIMA NO MA (Whole)	167	2.7	144	56	36	80	40	64	—	
SHIMA NO MA (East) (a half of the room size)	79		64	24	24	40	20	32	—	
SHIMA NO MA (West) (a half of the room size)	88		64	24	24	40	20	32	—	
KATSURA NO MA (Japanese style: whole)	84 tatami mats	2.4	—	—	28	—	—	—	72	
KATSURA NO MA (1/3 of the room size)	28 tatami mats		—	—	16	—	—	—	24	
KAEDE (1/3 of the room size)	28 tatami mats		—	—	16	—	—	—	24	
KIRI (1/3 of the room size)	28 tatami mats		—	—	16	—	—	—	24	

*1: Roll back seats for 162 person are available for SAKURA NO MA.

Seasonal charms of Ise-Shima

Month	Spring			Summer			Autumn			Winter	
	3	4	5	6	7	8	9	10	11	12	1
Seasonal food	Abalone (Toba, Shima)			Ise-ebi Lobster (Toba, Shima)			Ise-ebi Lobster (Toba, Shima)			Matoya oyster (Shima)	
	Ise-ebi Lobster (Toba, Shima)			Matoya oyster (Shima)			Abalone caught through free-diving by ama divers is a specialty of spring and summer. Autumn and winter are the best season for Ise-ebi lobsters, high-quality Matoya oysters farmed in Matoya Bay, and Anorifugu wild tiger puffer landed at Anori Fishing Port. All of them are Mie's brands.			Anorifugu tiger puffer (Shima)	
	Cherry blossoms of Miyagawa River bank (Ise)			Sea-bathing at Goza-shirahama beach (Shima)			Goza-shirahama beach, located at the tip of the Shima Peninsula, is shallow and famous for clear water and white sands. Kou Shirahama beach, facing east, is a popular surfing spot that attracts surfers from distant places.			Strawberry picking (Ise, Shima)	
	Cherry blossoms along the Isuzu River (Ise)			Surfing at Kou Shirahama beach (Shima)			Shima City Tourist Farm (Shima)			Strawberry picking (Ise, Shima)	
Flowers / Experience	Nemophila			Sunflowers, Kochia			Cosmos and crimson kochia			Strawberry picking (Ise, Shima)	
	Located behind Roadside Station Iseshima, this area features a vast flower garden where you can stroll among a colorful variety of seasonal blooms.			Strawberry picking (Ise, Shima)			Strawberry picking (Ise, Shima)			Strawberry picking (Ise, Shima)	
	Ise-ebi Festival (Shima)			Waraji Festival (Shima)			Shiokake Festival (Shima)			Anori Puppet Show (Shima)	
	It is held on the first Saturday of June in Hamashima-cho, the "town of Ise-ebi lobsters." The highlight is the Jakoppe Dance and the Ise-ebi Mikoshi.			This is a traditional event of September in Nakiri, Daico-cho. Based on a legend of a giant driven off, huge waraji (straw sandals) are made and floated into the sea.			People go to Oshima island by boat to pray for safety at sea and good catches of fish. Then, boats splash seawater on each other at Wagu Fishing Port. That's a unique festival of July.			This is a traditional performing art dedicated to the festival rite of Anori Shrine, in which three people manipulate a single puppet. It is performed in mid-September every year.	

Toba Seaside Hotel

- Total number of rooms: 206
- Maximum capacity: 1,095 guests
- Parking capacity: 200 standard cars, 30 large buses (free of charge)
- Access: By train: 10 minutes using free shuttle bus from Kintetsu/JR Toba Sta.
- By car: About 20 minutes from Ise IC of Ise Expressway

Enjoy bathing to your heart's content while viewing Toba Bay
 Located on a good place facing the calm Toba Bay, this resort hotel is good for enjoying hot springs. We have three large public bathrooms using Sakakibara Hot Spring Nanakuri-no-yu, which is famous for its skin-beautifying effect.

Hospitality in 12 types of rooms of rich individuality

Each of more than 200 guest rooms, such as rooms overlooking Toba Bay, gorgeous rooms having an open-air hot spring bath, and standard Japanese-style rooms, has different atmosphere. You can choose one that best suits your travel style.



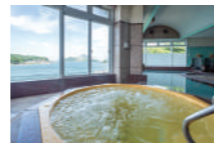
Migiwakan: standard room



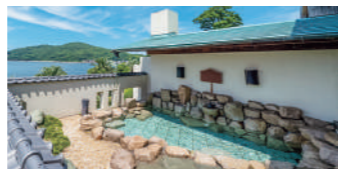
Nozomikan: special room

Three large hot spring baths in different atmosphere

We have three unique hot spring baths: Kazami-no-yu open-air bath overlooking Toba Bay, Migiwa-no-yu with spa, and Misaki-no-yu open-air bath closest to the sea.



Migiwa-no-yu



Misaki-no-yu



Kazami-no-yu

For dinner, choose buffet or kaiseki

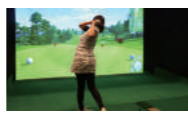
You can choose dinner from either Shiki Dinner Buffet featuring about 50 kinds of Japanese and Western dishes based on seafood, or Shiki kaiseki using lobsters, abalones, and Matsusaka beef which are all specialties of Mie Prefecture.



Kaiseki (image)

A variety of activities

We have many activities which a family or group can enjoy together outside or inside the hotel, including swimming pools (summer season only), ground golf, and a golf simulator.



Golf simulator



Ground golf

Banquet halls and meeting rooms satisfying users' needs

Besides a large banquet hall accommodating maximum 540 people, 12 large and small banquet halls, convention halls, and special meeting rooms are available.



Shinju

Seaside hall

Yoshizuki

Room name	Area (m ²)	Ceiling height (m)	Capacity (person) *It may not be available in some cases						
			Conference room			Banquet room			
			Theater style	Classroom style	Square shape style	Standing buffet	Seated buffet	Formal seating	Japanese-style
SEASIDE HALL (can be divided into four rooms)	510	5.5	600	400	100	300	200	200	—
KUROSHIO (can be divided into two rooms)	300	3.0	200	130	80	—	—	—	—
KEISHO (can be divided into three rooms)	260	3.0	150	120	70	100	100	100	130
KINRAN NO MA (can be divided into two rooms)	82	2.6	50	30	28	—	—	—	—
MTSUSHIMA	34	3.0	—	—	20	—	—	—	—
SHINJU (can be divided into three rooms)	400 (tatami mats)	3.4	—	—	—	—	—	—	450

Sanco Inn Iseishi Ekimae

- Total guest rooms: 128 (main building), 37 (annex)
- Maximum capacity: 426 people
- Parking: 12 spaces at the main building (1,000 yen per night); MiralSE partner parking at the annex (800 yen per 24 hours)
- Access: Train: Approx. 2-minute walk from Kintetsu/JR Iseishi Station
- Car: Approx. 7 minutes from Ise Nishi IC on the Ise Expressway

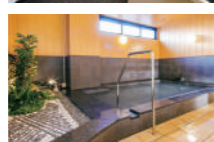
A relaxing hotel near Iseishi Station, perfect for your Ise pilgrimage

Ideally located just a short walk from Kintetsu and JR Iseishi Station, the hotel offers a refined and relaxing stay in either the main building or the annex, each featuring a unique atmosphere.

Main Building: Shiki no Yu

A two-minute walk from the station—the perfect base for your Ise pilgrimage and sightseeing.

Ideally located for easy access, our hotel features a large communal bath where you can unwind. Soak in the Shiki no Yu bath, an artificial hot spring featuring Komeiseki medicinal minerals. These gentle, naturally derived components soothe your fatigue. At night, enjoy a restful sleep with Serta mattresses and down duvets.



Annex: Grande

Offering all twin rooms with a sophisticated, elegant atmosphere.

All guest rooms are twin rooms with separate bathrooms and toilets, offering a refined and comfortable stay. Guests can enjoy complimentary services, including a sky lounge with panoramic views of Ise City, where snacks and drinks are served, and a breakfast featuring fresh croissants delivered directly from a popular local bakery.



Ise-Shima Flowers & Fruit

Shima City Tourist Farm

Seasonal Flowers Coloring the Vast Slopes

Located behind Roadside Station Iseshima, seasonal flowers are planted across the gentle slopes. The farm opens during blooming periods, featuring nemophila in spring, sunflowers and kochia in summer, and cosmos and crimson kochia in full bloom across the landscape in autumn.



- Hours: 9:00 – 17:00 (Spring/Summer), 9:00 – 16:00 (Autumn)
- Admission: Adults: 300 yen; *Free for junior high school students and younger
- Access: Approx. 30 minutes from Ise Nishi IC on the Ise Expressway (along Route 167)
- Parking: Approx. 160 spaces (Free)

JA Ise Nagasawa Farm

A Strawberry picking experience: Large, vibrant red Shima strawberries

Shima City's specialty strawberry, the "Red Pearl," is known for its large size, well-balanced flavor, and deep red flesh that extends throughout the fruit. At JA Ise Nagasawa Farm in the city, you can enjoy strawberry picking in a barrier-free environment.



- Hours: 9:00 – 16:00 (45-minute all-you-can-eat); *Available for a limited time from winter to spring; phone reservation required.
- Experience Rate: Rates vary by season.
- Closed: Tuesdays
- Access: Train: Approx. 8-minute walk from the Nagasawa Bus Stop after departing from Kintetsu Ugata Station
- Car: Approx. 50 minutes from Ise Nishi IC on the Ise Expressway
- Parking: Approx. 30 spaces (Free)

Melon House - Kawaguchi (Nambarii Melon)

A café specializing in sweet, delicious melons

Grown at Kawaguchi Farm in Hamajima-cho, Shima City, Nambarii melons are carefully cultivated with only one fruit per vine to ensure exceptional quality. At the farm's café, you can enjoy these sweet and flavorful specialty melons all year round.



- Hours: Café 10:00 – 16:00
- Open: Saturdays and Sundays only
- Access: Train: Approx. 10-minute walk from the Nambarii-guchi Bus Stop after departing from Kintetsu Ugata Station
- Car: Approx. 60 minutes from Ise Nishi IC on the Ise Expressway
- Parking: Available (Free)



Information on Kintetsu Railway

Kintetsu Railway trains connect major cities in the Kinki and Tokai regions including Osaka, Kyoto, Nara, and Nagoya, with Ise-Shima area. Its Limited Express offers a speedy and comfortable trip to Ise-Shima. Kintetsu Railway is directly connected to the Shinkansen at Nagoya and Kyoto. Also, transferring from Kobe area is easy via Hanshin Line.

Sightseeing Limited Express "Shimakaze"

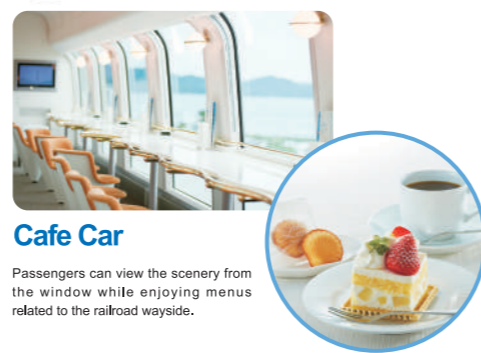


To Ise-Shima with the highest level of comfort

Kintetsu's sightseeing express train provides a special space and service which passengers can enjoy taking the train itself. Dedicated attendants will entertain passengers until their destinations.



Premium Seats
A deluxe class seat that has only three seat sets in a row, and the space between rows is wide. With the seats made of genuine leather, passengers can feel comfortableness like sitting on a sofa from the moment they sit on.



Cafe Car
Passengers can view the scenery from the window while enjoying menus related to the railroad wayside.

Group Seating Car

A relaxing space equipped with a table, suitable for group travel



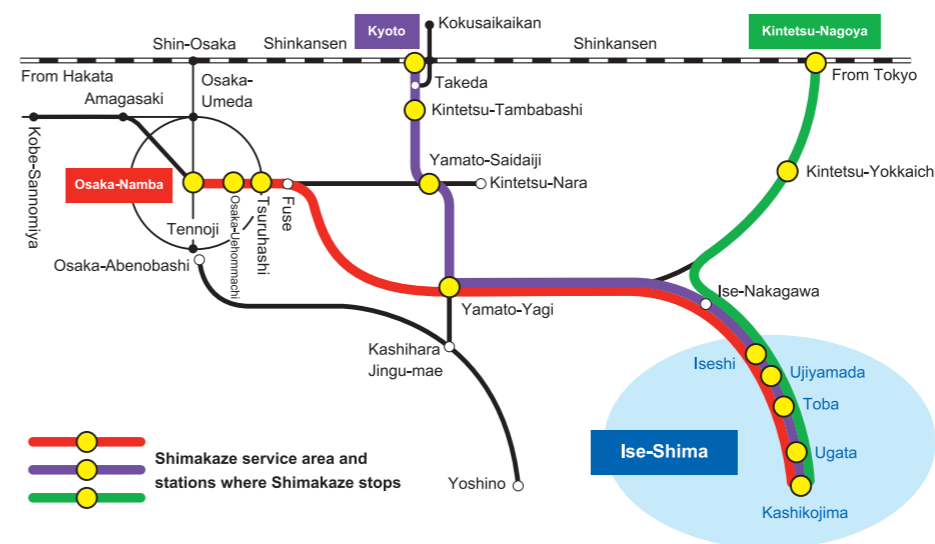
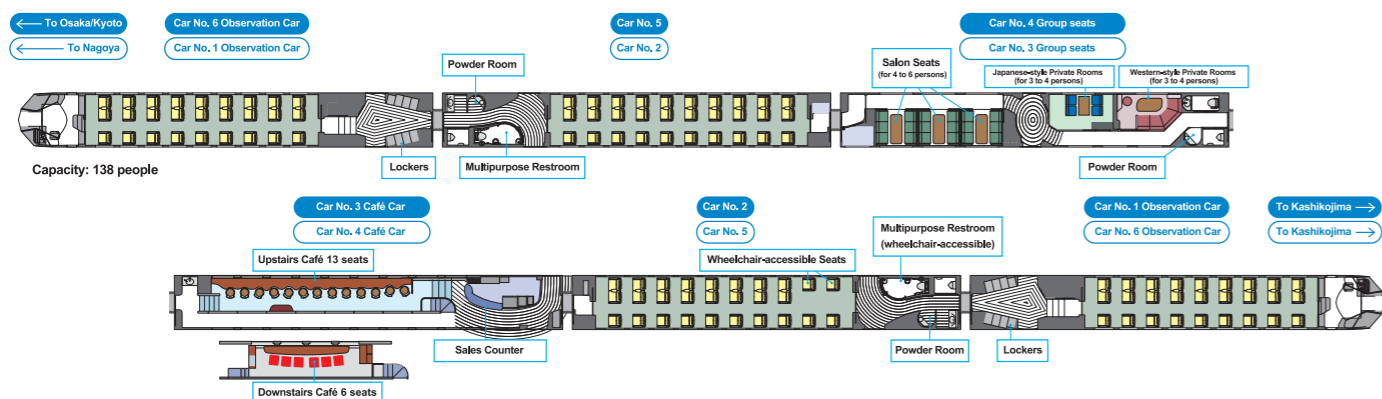
Salon Seats (for 4 to 6 persons)



Japanese-style Private Rooms (for 3 to 4 persons)



Western-style Private Rooms (for 3 to 4 persons)



From Osaka-Namba
About 1 hour and 40 minutes to Isehi
About 1 hour and 50 minutes to Toba
About 2 hours and 25 minutes to Kashikojima

From Kyoto
About 2 hours and 5 minutes to Isehi
About 2 hours and 20 minutes to Toba
About 2 hours and 45 minutes to Kashikojima

From Kintetsu-Nagoya
About 1 hour and 20 minutes to Isehi
About 1 hour and 35 minutes to Toba
About 2 hours and 5 minutes to Kashikojima

From Kashikojima
About 30 minutes to Toba
About 45 minutes to Isehi

*Times indicated are approximate for the Shimakaze Limited Express.

Operating days
To/from Osaka: Daily except Tuesdays, in principle
To/from Nagoya: Daily except Thursdays, in principle
To/from Kyoto: Daily except Wednesdays, in principle

*Please note that schedules are subject to change without prior notice due to maintenance or other reasons.

Service Schedule for Shimakaze

Osaka-Namba → Kashikojima			Kashikojima → Osaka-Namba		
	Weekdays	Saturdays and holidays		Weekdays	Saturdays and holidays
Departing from Osaka-Namba	10:40	10:40	Departing from Kashikojima	16:00	16:00
Departing from Osaka-Uehommachi	10:43	10:43	Departing from Ugata	16:05	16:05
Departing from Tsurunashi	10:46	10:46	Departing from Toba	16:30	16:30
Departing from Yamato-Yagi	11:11	11:13	Departing from Ujiyama	16:41	16:41
Arriving at Isehi	12:16	12:16	Departing from Isehi	16:43	16:43
Arriving at Ujiyama	12:18	12:18	Arriving at Yamato-Yagi	17:49	17:49
Arriving at Toba	12:31	12:31	Arriving at Tsurunashi	18:15	18:16
Arriving at Ugata	12:58	12:58	Arriving at Osaka-Uehommachi	18:17	18:19
Arriving at Kashikojima	13:03	13:03	Arriving at Osaka-Namba	18:21	18:22

Kyoto → Kashikojima			Kashikojima → Kyoto		
	Weekdays	Saturdays and holidays		Weekdays	Saturdays and holidays
Departing from Kyoto	10:00	10:00	Departing from Kashikojima	14:50	14:50
Departing from Kintetsu-Tambabashi	10:06	10:06	Departing from Ugata	14:55	14:55
Departing from Yamato-Saidaiji	10:32	10:32	Departing from Toba	15:20	15:20
Departing from Yamato-Yagi	10:54	10:54	Departing from Ujiyama	15:32	15:32
Arriving at Isehi	12:03	12:00	Departing from Isehi	15:34	15:34
Arriving at Ujiyama	12:06	12:03	Arriving at Yamato-Yagi	16:39	16:39
Arriving at Toba	12:17	12:14	Arriving at Yamato-Saidaiji	17:01	16:58
Arriving at Ugata	12:41	12:38	Arriving at Kintetsu-Tambabashi	17:27	17:22
Arriving at Kashikojima	12:46	12:44	Arriving at Kyoto	17:34	17:30

Kintetsu-Nagoya → Kashikojima			Kashikojima → Kintetsu-Nagoya		
	Weekdays	Saturdays and holidays		Weekdays	Saturdays and holidays
Departing from Kintetsu-Nagoya	10:25	10:25	Departing from Kashikojima	15:40	15:40
Departing from Kintetsu-Yokkaichi	10:53	10:54	Departing from Ugata	15:45	15:46
Arriving at Isehi	11:40	11:40	Departing from Toba	16:10	16:13
Arriving at Ujiyama	11:42	11:42	Departing from Ujiyama	16:22	16:23
Arriving at Toba	11:54	11:54	Departing from Isehi	16:24	16:25
Arriving at Ugata	12:21	12:21	Arriving at Kintetsu-Yokkaichi	17:12	17:14
Arriving at Kashikojima	12:27	12:27	Arriving at Kintetsu-Nagoya	17:44	17:44

* To use Shimakaze, the basic fare, limited express charge and extra fee for limited express Shimakaze are required.
* To use the Japanese-style private room or Western-style private room, an extra fee for Private room (1,050 yen per room) is separately required.

A new sightseeing train connecting Nagoya and Ise-Shima

Restaurant Train: Les Saveurs Shima

In autumn 2026, a new restaurant train based on the concept of "an elegant train journey, invited by fine dining" will begin service between Kintetsu-Nagoya Station and Kashikojima Station. The name comes from the French word "saveurs," meaning flavors or aromas, evoking the deep, complex flavors created by Ise-Shima's diverse ingredients. Enjoy fine French cuisine in a sophisticated interior. In Car 4, guests can savor an authentic French course menu supervised by Hiroe Higuchi, Executive Chef of Shima Kanko Hotel, featuring the finest ingredients from Mie Prefecture. Cars 1 and 2 will offer French-style Zen bento boxes (supervised by Kintetsu Miyako Hotels), featuring a colorful variety of dishes made with local Mie ingredients.



Cars 1 and 2 (image) Car 4 (image)

*All images of the train exterior and interior are for illustrative purposes only.

Discounted tickets to Ise-Shima

To visit sightseeing spots and go around Ise-Shima area

Valid for 4 days

Ise, Toba and Shima Super Passport

Digital Mawaryanse



Direct shuttle bus service connecting Ise Jingu Naiku (inner sanctuary) and the Shima area with no transfers

Pearl Shuttle

Advance reservations are required.

*It is possible to ride on the day without reservation when seats are available.



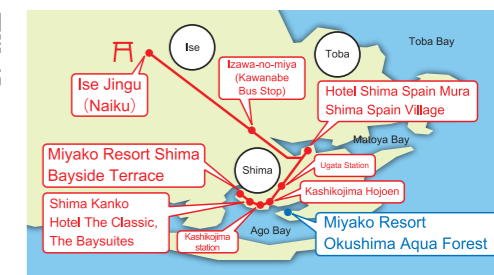
Shima Area → Ise Jingu Naiku

Time	Myiako Resort Shima Bayside Terrace	Shima Kanko Hotel The Classic	Shima Kanko Hotel The Baysuites	Kashikojima station	Kashikojima Hojoen	Ugata station	Shima Spain Village	Hotel Shima Spain Mura	Kawanabe bus stop (Izawanomiya)	In front of Naiku
08:25	08:31	08:35	08:40	08:45	08:55	09:08	09:10	09:21	09:54	
11:00	11:06	11:10	11:20	11:20	11:30	11:43	11:45	11:56	12:29	

Ise Jingu Naiku → Shima Area

Time	In front of Naiku	Kawanabe bus stop (Izawanomiya)	Hotel Shima Spain Mura	Shima Spain Village	Ugata station	Kashikojima Hojoen	Kashikojima station	Shima Kanko Hotel The Classic	Shima Kanko Hotel The Baysuites	Myiako Resort Shima Bayside Terrace
15:30	15:57	16:10	16:16	16:26	16:36	16:42	16:47	16:50	16:57	

*Service is not available for travel only between Hotel Shima Spain Mura and Ugata Station, or between different accommodation facilities.
*Schedules are as of April 1, 2026. Times are subject to change; please check our website for details.



Departure Point (Naiku): Naiku-mae (Ujibashi-mae Bus Rotary)
*Please check the Pearl Shuttle website for details.

Between Ise Jingu (Naiku) and Kashikojima
Fare (per person, one way): Adults: 1,500 yen. Children: 750 yen
For details, please contact Tourism Sales Systems, Mie Kotsu Co. Ltd.
Tel: +81-52-253-6324 (Office hours: 10:00 - 18:00)

Chartered Bus

Mie Kotsu

Mie Kotsu provides comfortable sightseeing buses transporting smoothly to destination for training and site-visit, excursions and field trips, club activities and camps, and group tours. The company offers the most suitable sightseeing bus for customers' needs for the number of people and facilities, such as a large-sized bus accommodating a large group or a medium-sized bus suitable for a group of less than 30 people.

No. of vehicles

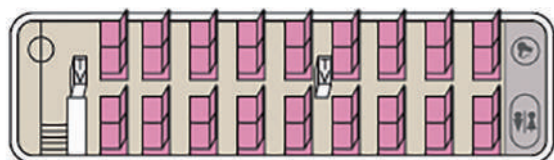
Large-sized buses (for 37-60 passengers): 96
 Large-sized buses (for 36 passengers, equipped with a powder room & toilet): 3
 Medium-sized buses (for 27 passengers): 3
 Medium-sized buses (for 24 passengers): 2

Service Area

- Entire Mie Prefecture
- Entire Aichi Prefecture
- Gifu Prefecture: Kaizu City
- Shiga Prefecture: Koka City
- Nara Prefecture: Yamazoe Village, Uda City, Soni Village, Mitsue Village, Higashiyoshino Village, Kawakami Village, Kamikitayama Village, Shimokitayama Village, Totsukawa Village
- Wakayama Prefecture: Shingu City, Kitayama Village (Higashimuro District)

Examples of buses to be chartered DREAM II (equipped with a powder room & toilet)

With a powder room & toilet, passengers can be assured and enjoy a comfortable luxurious bus trip.



Seat image: 36 regular seats, no auxiliary seats

DREAM II, equipped with a powder room & toilet, enables an assured and comfort long-distance trip.



Inside of a bus is spacious. Seats are equipped with leg & arm rests and movable pillows to relieve fatigue. There is also a power outlet for each seat.



There is a powder room with a western-style toilet having noise-masking function.



When traveling at night, LED fiber lighting creates a relaxing atmosphere.

Chartered Taxi

Sanco Taxi

Chartered taxi is recommended for traveling in a small group. We offer a diverse fleet to meet every need, including six-passenger Alphards, jumbo taxis for up to nine passengers, and medium-sized taxis for up to four. We also provide premium six-passenger hire cars to satisfy high-end guests, as well as universal design taxis for easy wheelchair access.



Alphard



Jumbo taxi



Prius

Number of Vehicles

Alphards (6-passenger): 2
 Jumbo Taxis (9-passenger): 15
 Priuses (4-passenger): 18
 Sedans (4-passenger): 79

Noahs (5-passenger): 3
 JPN TAXIs (4-passenger): 9
 Sientas (4-passenger): 8
 Roomys (4-passenger): 3

Mie Kintetsu Taxi

Choose from a variety of chartered taxis to visit your desired sightseeing spots, tailored to your group size and preferences. Our diverse fleet includes the popular Alphard (seating six or seven) for sightseeing and VIP transfers, jumbo taxis (seating nine) with reclining seats for comfort on long journeys, and JPN TAXI with its spacious, relaxing interior.



Alphard



Jumbo Taxi (Black)



JPN TAXI ("HINOTORI" wrapping)

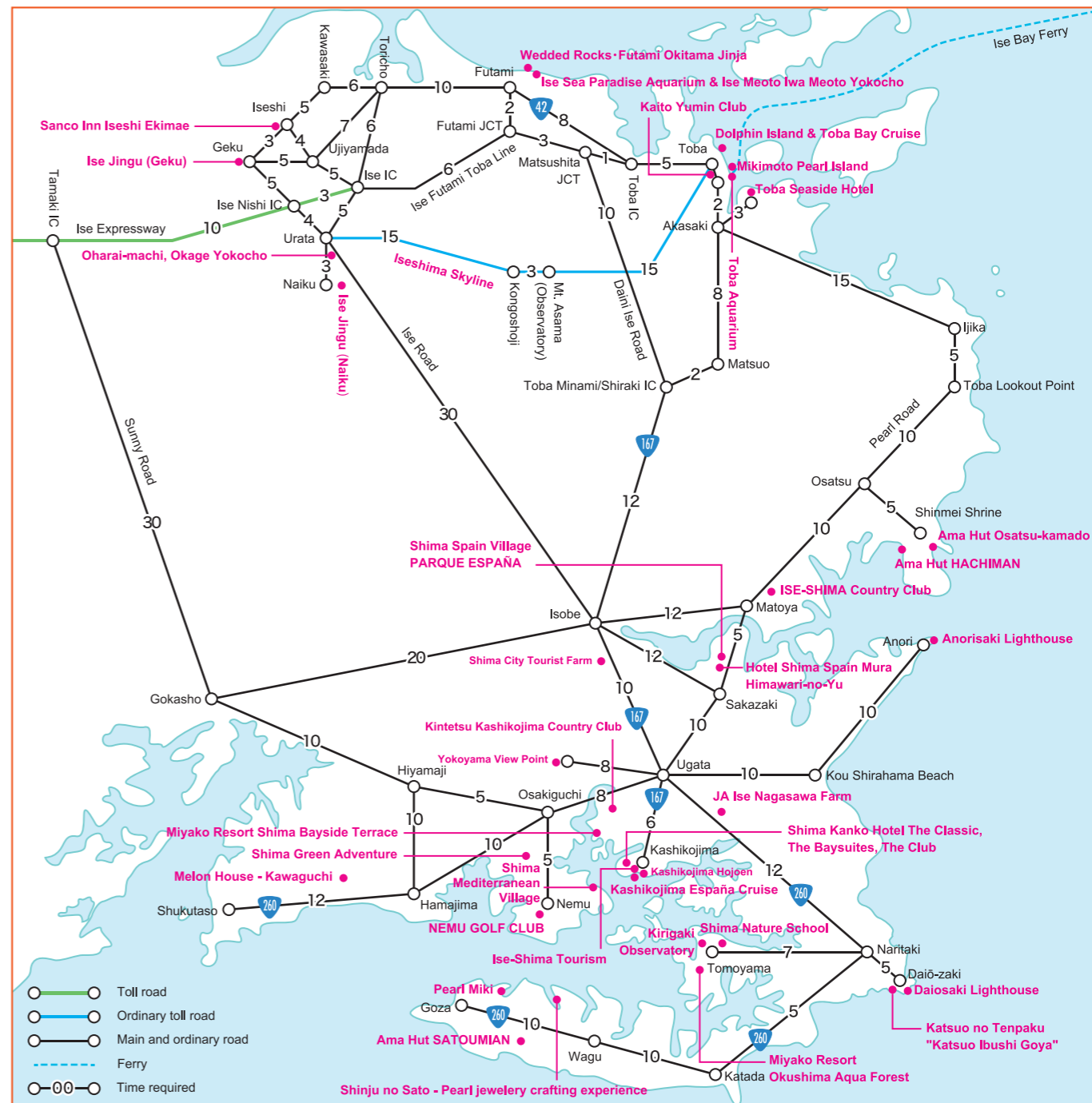
Number of vehicles

Alphards (6-passenger: 3 / 7-passenger: 2): 5
 Jumbo Taxis (9-passenger): 10
 Crown Models (4-passenger): 3

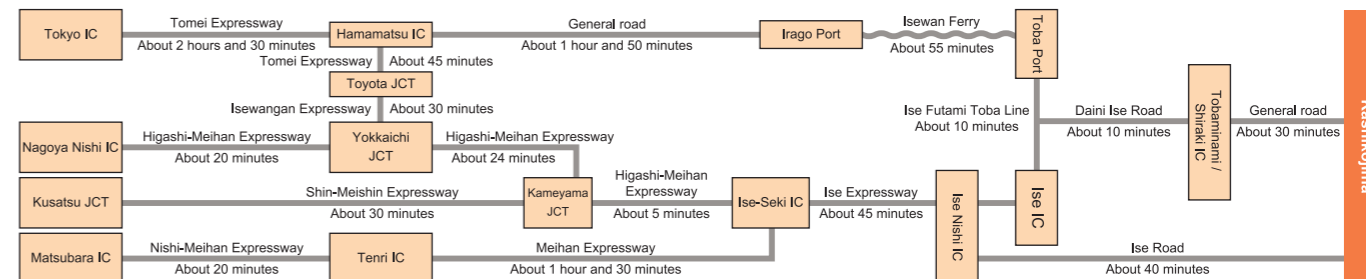
JPN TAXIs (4-passenger): 72
 Sientas (4-passenger): 34

Access Guide of the Ise-Shima Area by Car

The figures are the time required for traveling between spots.



Access by chartered bus



Meihan SEKI Drive-in

Meihan Seki Drive-in is a driver's oasis located at a key point on the main road connecting tourist attractions in Mie Prefecture with the Chubu and Kansai regions. It has a restaurant where visitors can enjoy local specialties like Matsusaka beef either as a light meal or a Kaiseki-style. Also, there are souvenir shops having a large selection of confections from Kameyama, specialties from Ise-Shima, and recommended locally-brewed sake.

Opening hours: 8:00-19:00 Parking capacity (dedicated free parking area): 230 standard-size cars, 50 buses

